

# FOREST EDGE

## FORDINGBRIDGE

### HOME 62

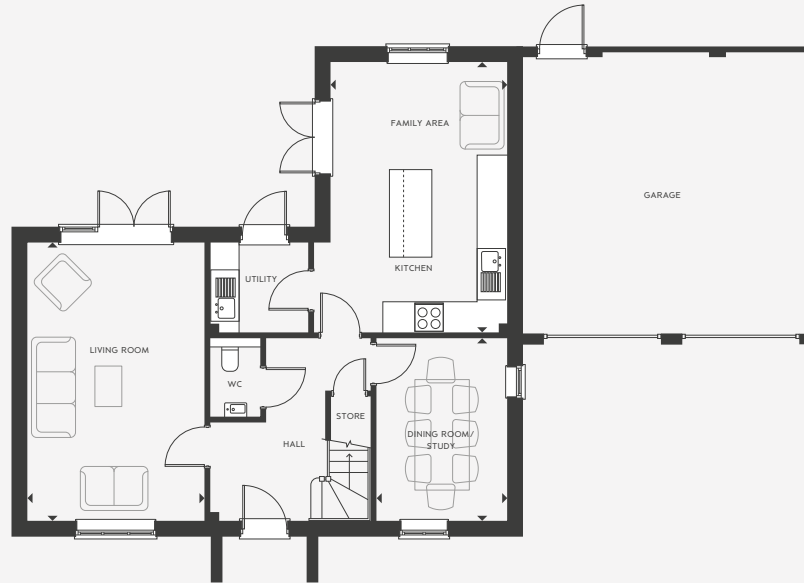
### THE ROSE

4 BEDROOMS | DETACHED | 1607 sq ft



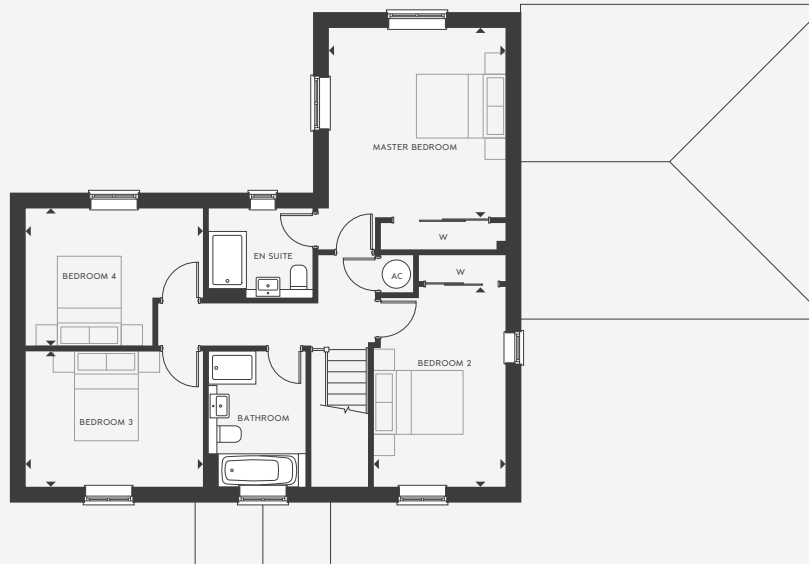
#### SPECIFICATION HIGHLIGHTS

- Kitchen with integrated appliances and island
- Separate Utility Room
- Separate Dining Room/Study
- En-suite Master Bedroom
- Built-in wardrobe in Master and Bedroom Two
- Carpets and Kardean flooring
- Double Garage with 2 parking spaces and EV charging point
- PV Solar Panels
- Fronting open green space
- 10 year build warranty



#### GROUND FLOOR

Kitchen/Family Area	5695mm x 3730mm	18' 8" x 12' 3"
Utility	2050mm x 1870mm	6' 9" x 6' 2"
Dining Room/Study	3845mm x 2750mm	12' 7" x 9' 0"
Living Room	5865mm x 3725mm	19' 3" x 12' 3"



#### FIRST FLOOR

Master Bedroom	4000mm x 3730mm	13' 1" x 12' 3"
Bedroom 2	4225mm x 2785mm	13' 10" x 9' 2"
Bedroom 3	3750mm x 2860mm	12' 4" x 9' 5"
Bedroom 4	3750mm x 2890mm	12' 4" x 9' 6"

Forest Edge, Salisbury Road, Fordingbridge, Hampshire SP6 1LX

[sales@metishomes.co.uk](mailto:sales@metishomes.co.uk)

01962 893545

The items within this specification are for guidance only and may be substituted at any time. Floorplans shown are for approximate measurements only. Exact layout and sizes may vary. All measurements may vary within a tolerance of 5%. The information in this document is indicative and is intended to act as a guide only as to the finished product. Accordingly, due to our policy of continuous improvement, the finished product may vary from the information provided. These particulars should not be relied upon as accurately describing any of the specific matters described by any order under the Property Misdescriptions Act 1991. This information does not constitute a contract, or warranty. The dimensions given on plans are subject to minor variations and are not intended to be used for carpet sizes, appliance sizes or items of furniture. Applicants are advised to contact selling agent to ascertain the availability of any property. Computer generated illustrations indicative only. Please check with a member of the Metis Homes team for the latest information.

